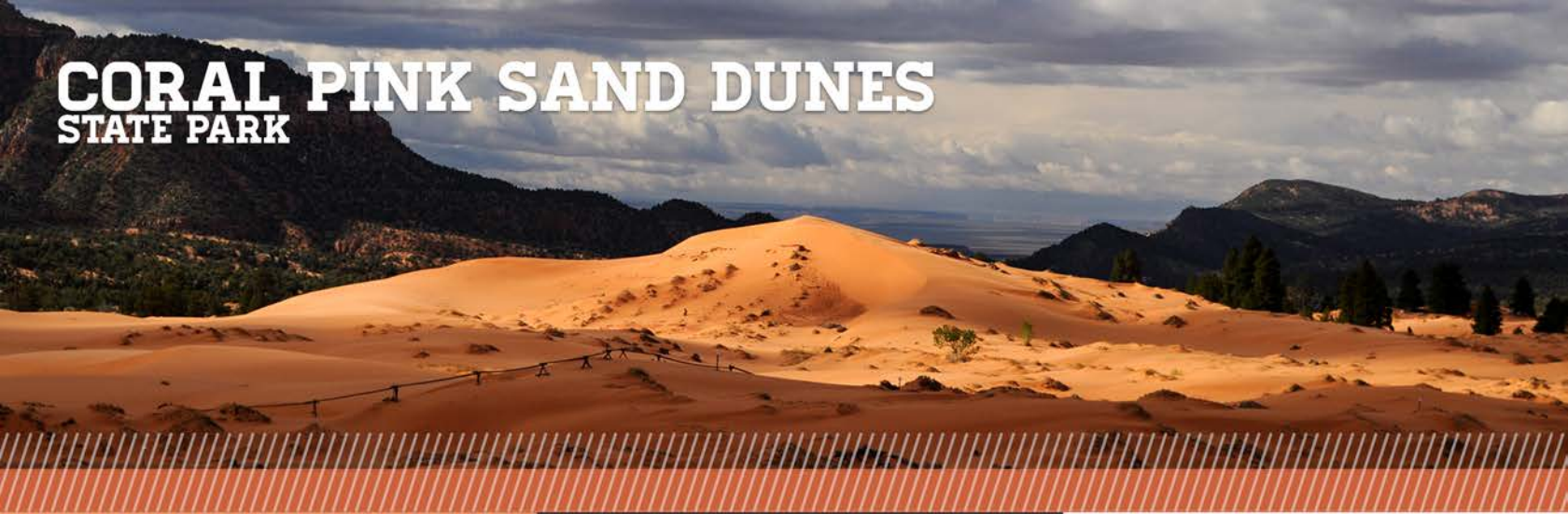


# CORAL PINK SAND DUNES STATE PARK



<b>OFF THE BEATEN PATH:</b>	<b>NO</b>
<b>BEST SEASON:</b>	<b>YEAR ROUND</b>
<b>OFF ROAD VEHICLE:</b>	<b>OHV</b>
<b>CAMPGROUND:</b>	<b>YES</b>
<b>AVERAGE TIME:</b>	<b>1 HOUR - FULL DAY</b>
<b>DIFFICULTY:</b>	<b>EASY</b>
<b>ELEVATION:</b>	<b>6000 FEET</b>

The Coral Pink Sand Dunes State Park is a local favorite. Let your imagination run wild. Your adventure possibilities are endless here, so let your imagination run wild. Venture onto the shifting sea of pink sand by foot, bike, board or OHV. You will discover 1200 acres of open riding areas for OHV enthusiasts. Adjacent to the park, riders will find hundreds of miles of additional trails on BLM land. Visitors can explore the South Fork Indian Canyon Pictographs, Hell Dive Pictographs, just 4 miles northeast of the park are dinosaur tracks. Bring a lunch and enjoy the picnic facilities and the view from the Observation Deck.

*Play in the sand and become a kid again.*

- GETTING THERE:**
- From Kanab, drive 8 miles north on HWY 89, turn left after mile post 71 onto Hancock Road.
  - Travel 9.5 miles, at the stop sign turn left.
  - The park entrance will be 5 miles on the left.
  - There are two campgrounds, one at the Coral Pink Sand Dunes State Park and the Ponderosa Grove Campground on the Hancock Road.
  - Sandboards can be rented and ATV and repelling tours can be arranged at the Sand Dunes State Park.
  - After a long exciting day of playing at the dunes, make your way back to Kanab, Base Camp for adventure seekers. Reserve a table for dining and enjoy the atmosphere at one of our popular restaurants. We are sure you will discover one of the best dining experience in Southern Utah.
  - See the Kane County Visitor Center for additional maps and adventures in the area.

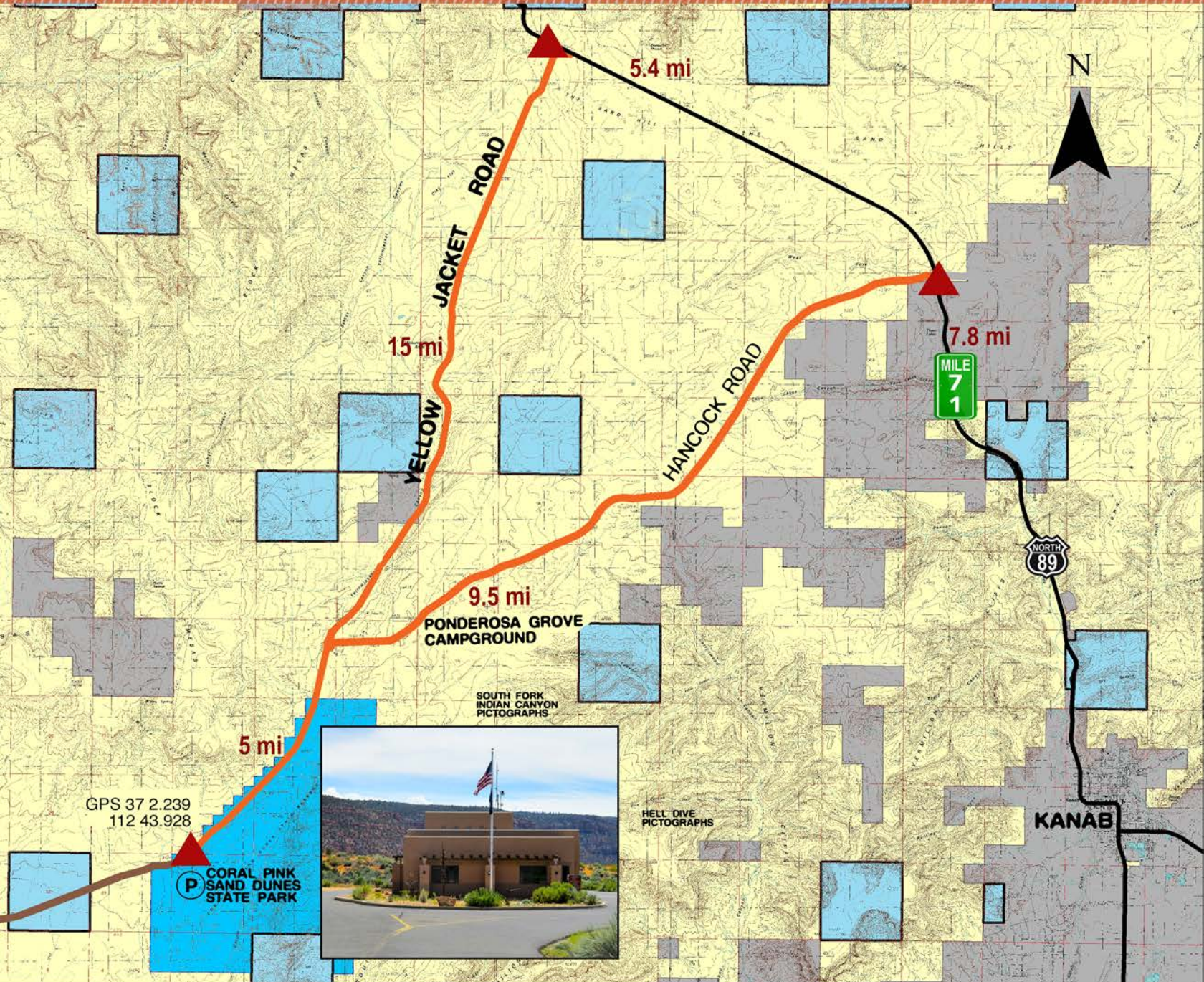
**DISCLAIMER:**

"This map and directions are intended for general reference use only. Always check local road and weather conditions. Stay on designated roads. Dirt roads are impassable when wet. Please respect Private Property. Be prepared for a wilderness experience: Always bring extra water, food, sunscreen, and supplies. Cell phone service is non-existent in most areas! Do not remove artifacts or deface the 'rock art'. Leave no trace of your visit so others may enjoy."

Kanab Visitor's Center: 78 S 100 E      PHONE: 435.644.5033



# CORAL PINK SAND DUNES STATE PARK



ADVENTURE MAP



tread lightly!  
.org

LIFE  
**UTAH**  
ELEVATED



**KANAB**  
MAGICALLY UNSPOILED